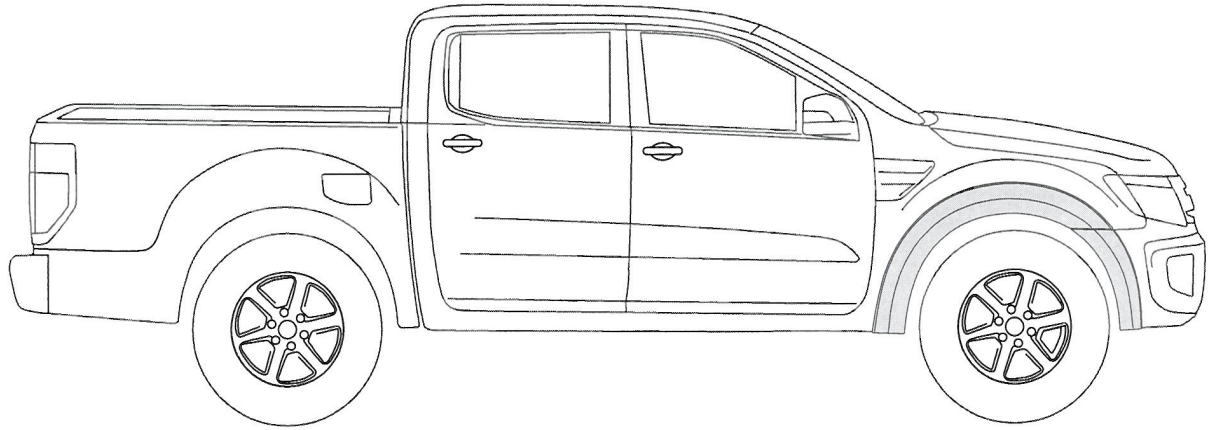


## FORD PX RANGER 2011-



### NOTES:

- Ensure that both left and right hand Fender Flares suit the profile of the vehicle. Note the areas where the Fender Flares come in contact with the vehicle.
- Before fitting Fender Flares remove any mouldings, strips or existing flares from the wheel arch. If there is a body side moulding, mark where the moulding is to be cut, alternatively the Fender Flares can be cut to go around the moulding. Be sure to allow enough room for the extrusion.

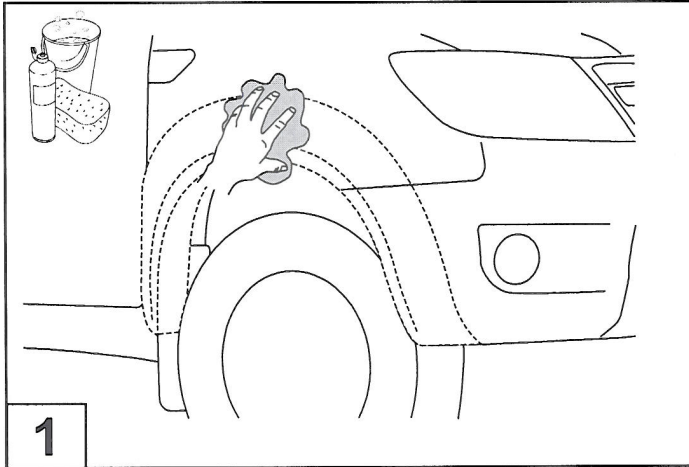
### PAINTING INSTRUCTIONS:

**⚠ Warning:** Do not fit trim edge extrusion or any of the hardware until paint is completely dry.

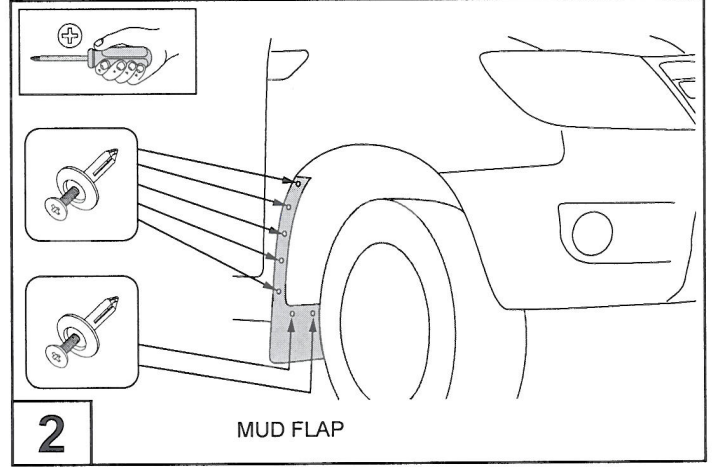
- Spot Sand Fender Flares where required prior to painting, recommend 500 grit using an orbital type sander.
- Prior to painting, clean all surfaces to be painted using clean water and a mild detergent, do not use lacquer thinner or any solvent based products. Wipe completely dry.
- Best results will be achieved by wiping the areas to be painted with a tack rag just prior to painting.
- Select a top coat and clear paint that is suitable for ABS (Acrylonitrile-Butadiene-Styrene).
- Automotive paint systems, such as Acrylics or Two Packs, can be applied directly to the components. However, some paints may require a primer. If recommendations on paint specifications are not followed, cracking of the part or degradation to the material may result. In all paint systems, aromatic hydrocarbons and alkalies are best avoided to reduce damage to the material properties.
- If using a paint system which requires baking, do not expose the product to temperatures above 70° C (155° F).
- Allow a minimum of 8 hours after baking before installation on the vehicle.

### COMPONENTS LIST

NO.	COMPONENT	QTY
1	Front Fender Flares (RHS & LHS)	2
2	Front Bumper Flares (RHS & LHS)	2
3	Extrusion	5m
4	Scrivet	22
5	Narrow Metal Clip	2
6	Wide Metal Clip	2
7	Alcohol Wipe	2
8	Installation Instructions	1

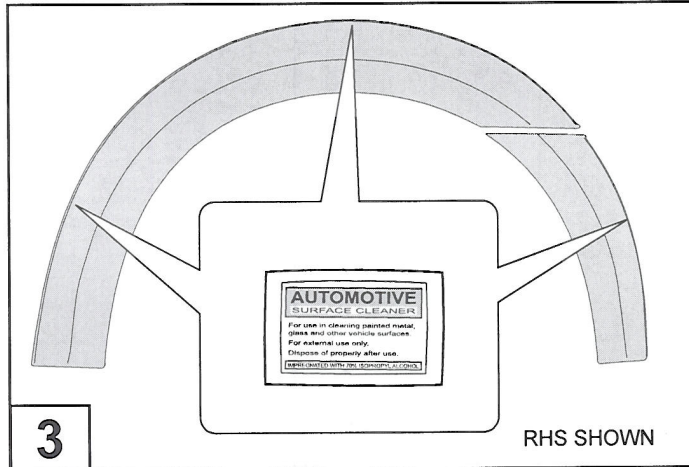
**1**

Wash the areas of contact on the vehicle and wipe dry both the vehicle and the Fender Flares with a clean cloth. Ensure inside of Fender Flares where extrusion is attached is clean.

**2**

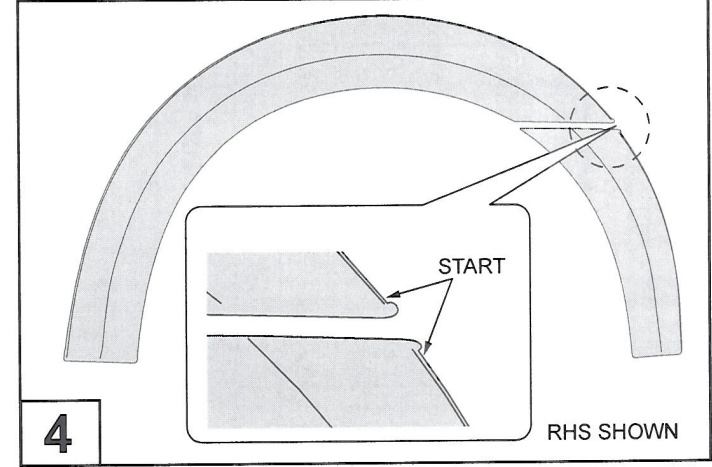
MUD FLAP

Remove the mud flaps by removing and retaining the 7 scrifts from inside the wheel arch as shown. NOTE: Replacement scrifts are supplied, if any scrifts are damaged upon removing from the vehicle.

**3**

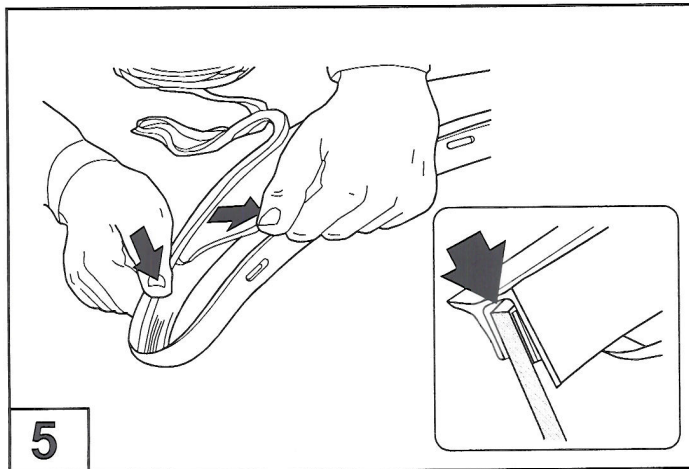
RHS SHOWN

Clean the inside edge of each fender flare where the rubber extrusion will adhere.

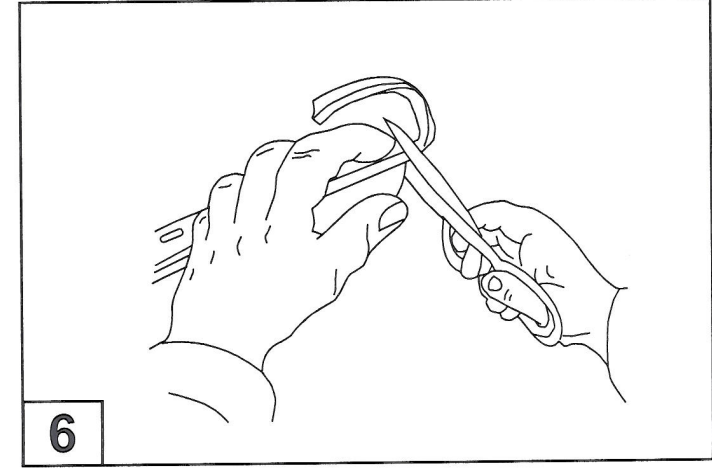
**4**

RHS SHOWN

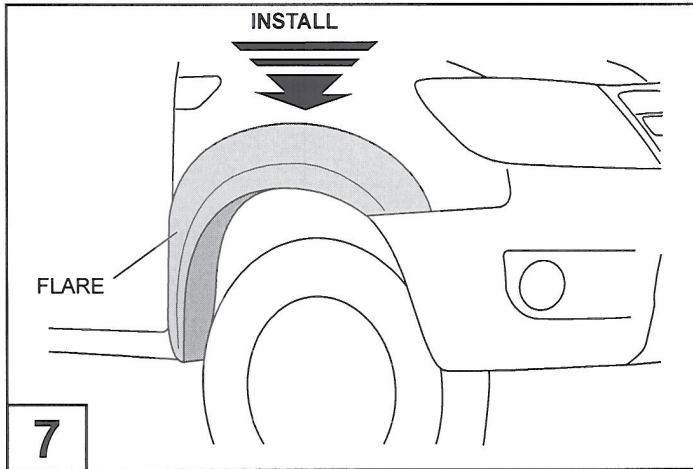
Remove approximately 50mm of the protective liner from the extrusion. Fit the extrusion to the Fender Flare along the edge that comes in contact with the vehicle's body panel. NOTE: Start applying the extrusion from area show above.

**5**

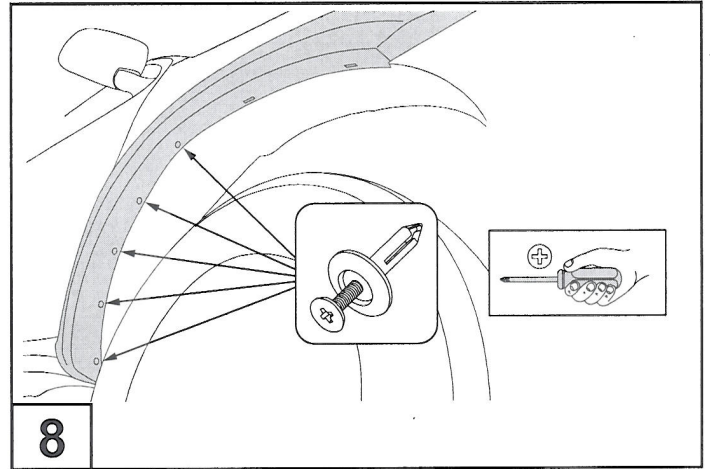
Pulling at right angles to the extrusion, remove the liner from the extrusion in small portions and apply thumb pressure to ensure that it adheres to the Fender Flares.

**6**

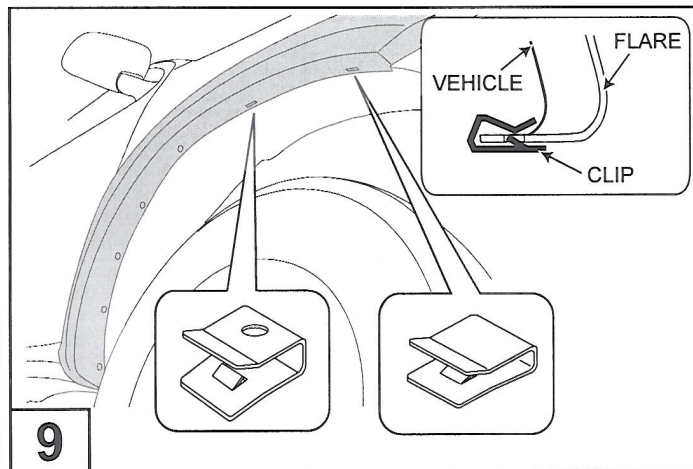
Trim any unnecessary extrusion and discard.



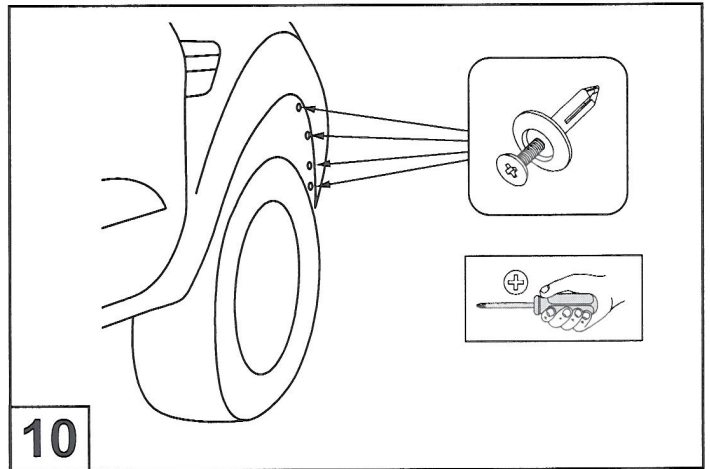
Fit the flare to the vehicle as shown.



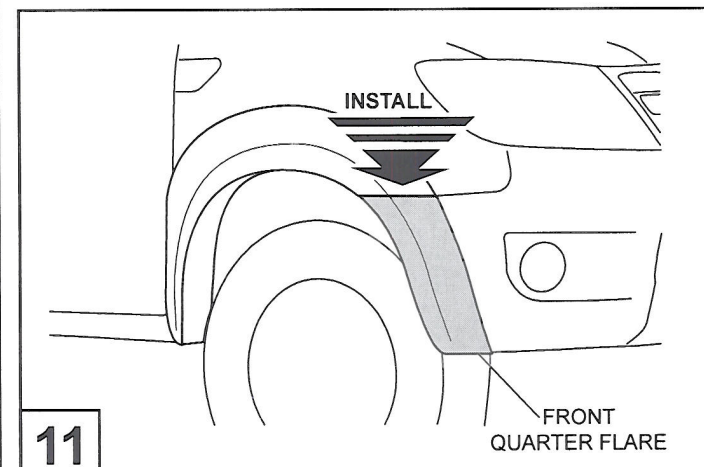
Install 5 wheel arch scrivenets onto the flare as shown. While pressing and holding the flare in position of best fit.



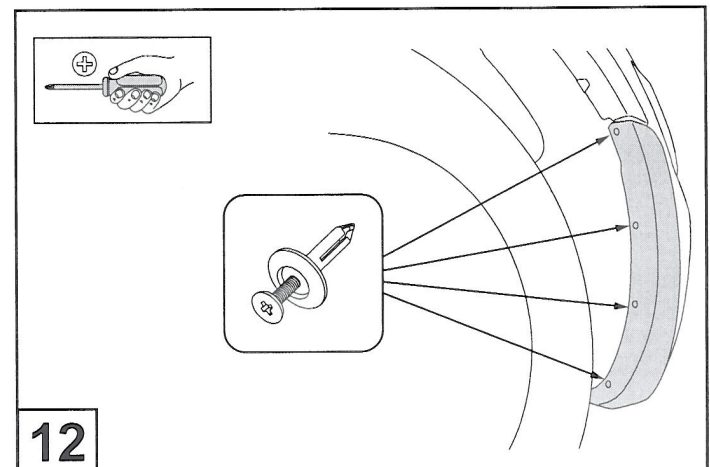
Install wheel arch clips as shown. Wide clip first and narrow clip next to it.



Remove all 4 scrivenets from the wheel arch on front bumper.

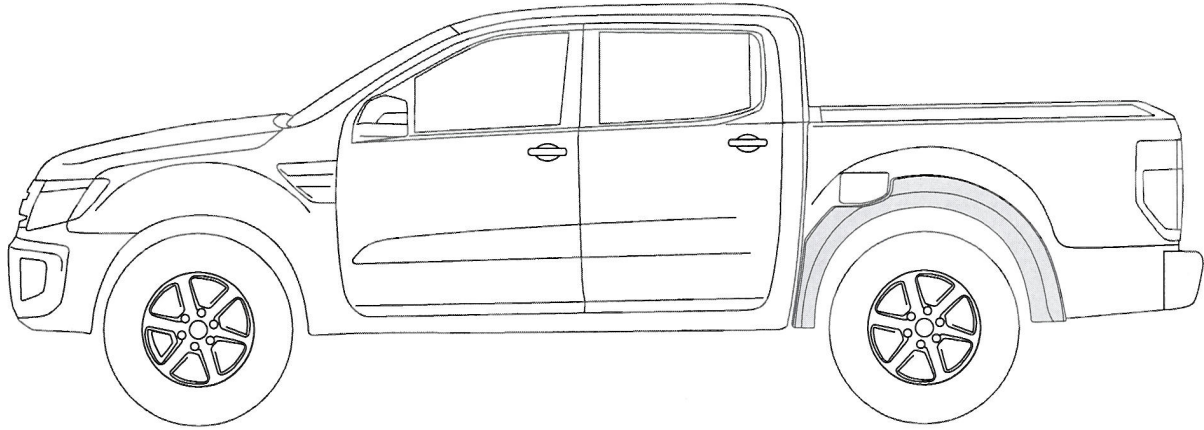


Fit the front quarter flare to the vehicle as shown.



Secure the fender flare to the wheel arch with 4 scrivenets as shown.

### FORD PX RANGER 2011-



#### NOTES:

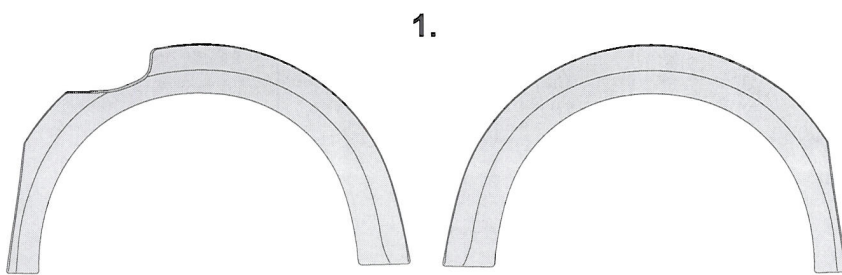
- Ensure that both left and right hand Fender Flares suit the profile of the vehicle. Note the areas where the Fender Flares come in contact with the vehicle.
- Before fitting Fender Flares remove any mouldings, strips or existing flares from the wheel arch. If there is a body side moulding, mark where the moulding is to be cut, alternatively the Fender Flares can be cut to go around the moulding. Be sure to allow enough room for the extrusion.

#### PAINTING INSTRUCTIONS:

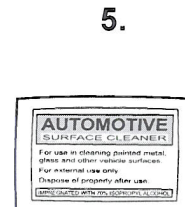
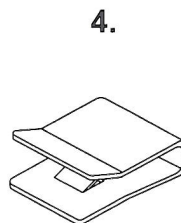
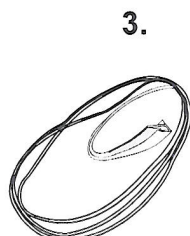
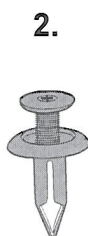
**⚠ Warning: Do not fit trim edge extrusion or any of the hardware until paint is completely dry.**

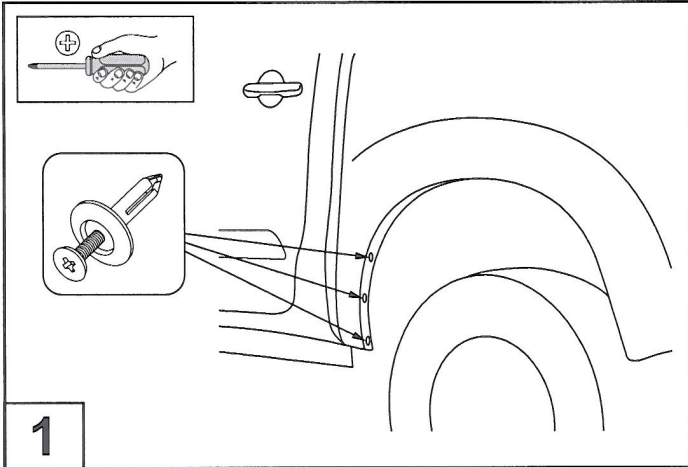
- Spot Sand Fender Flares where required prior to painting, recommend 500 grit using an orbital type sander.
- Prior to painting, clean all surfaces to be painted using clean water and a mild detergent, do not use lacquer thinner or any solvent based products. Wipe completely dry.
- Best results will be achieved by wiping the areas to be painted with a tack rag just prior to painting.
- Select a top coat and clear paint that is suitable for ABS (Acrylonitrile-Butadiene-Styrene).
- Automotive paint systems, such as Acrylics or Two Packs, can be applied directly to the components. However, some paints may require a primer. If recommendations on paint specifications are not followed, cracking of the part or degradation to the material may result. In all paint systems, aromatic hydrocarbons and alkalies are best avoided to reduce damage to the material properties.
- If using a paint system which requires baking, do not expose the product to temperatures above 70° C (155° F).
- Allow a minimum of 8 hours after baking before installation on the vehicle.

### COMPONENTS LIST

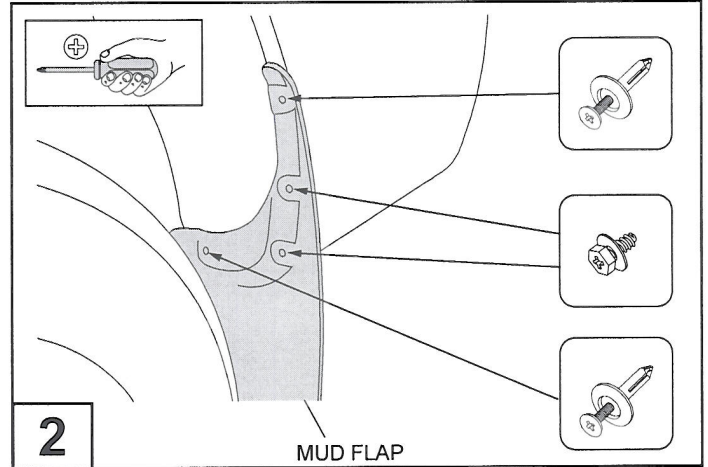


NO.	COMPONENT	QTY
1	Rear Fender Flares (RHS & LHS)	2
2	Scrivet	10
3	Extrusion	5m
4	Narrow Metal Clip	2
5	Alcohol Wipe	2
6	Installation Instructions	1

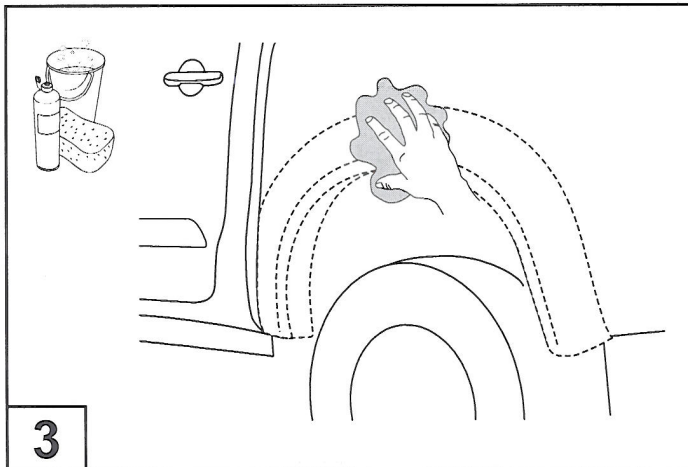




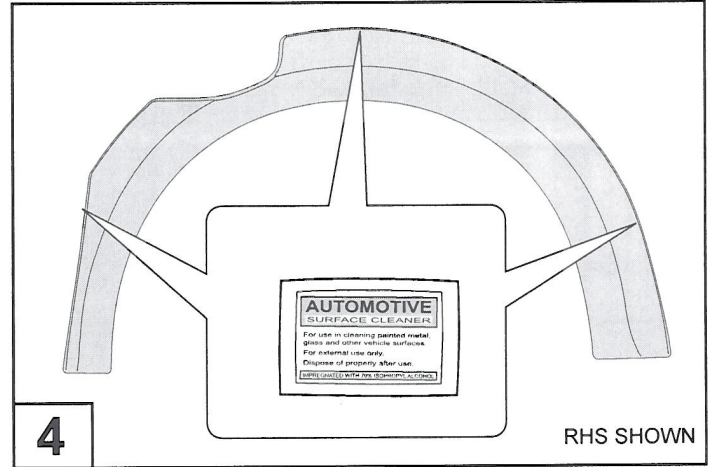
**1**  
Remove the 3 screws from inside the rear wheel arch as shown.  
NOTE: Replacement scrivets are supplied, if any scrivets are damaged upon removing from the vehicle.



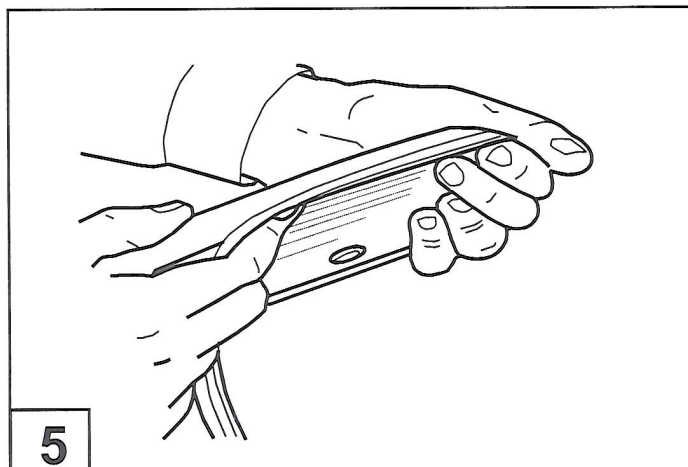
**2**  
Remove the rear mud flaps by removing and retaining the 2 screws and two scrivets from inside the wheel arch as shown.



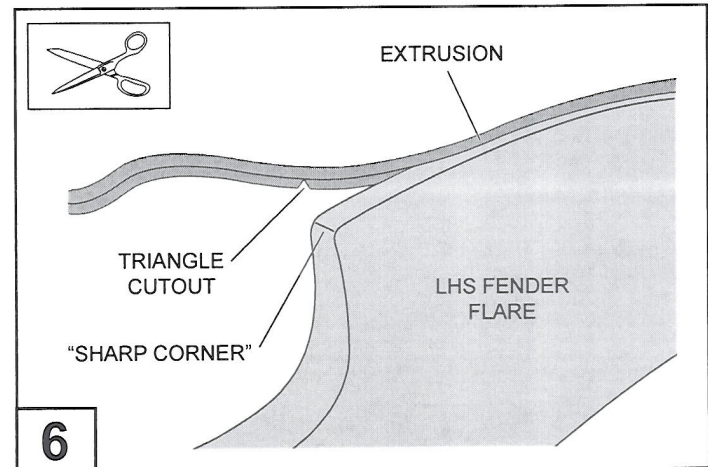
**3**  
Wash the areas of contact on the vehicle and wipe dry both the vehicle and the Fender Flares with a clean cloth. Ensure inside of Fender Flares where extrusion is attached is clean.



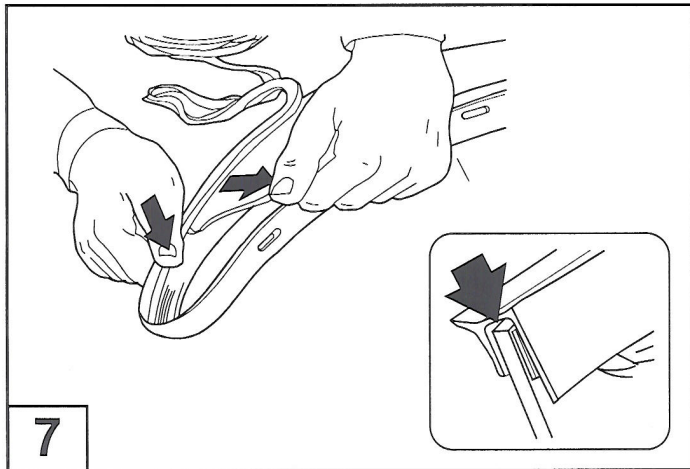
**4**  
Clean the inside edge of each fender flare where the rubber extrusion will adhere.



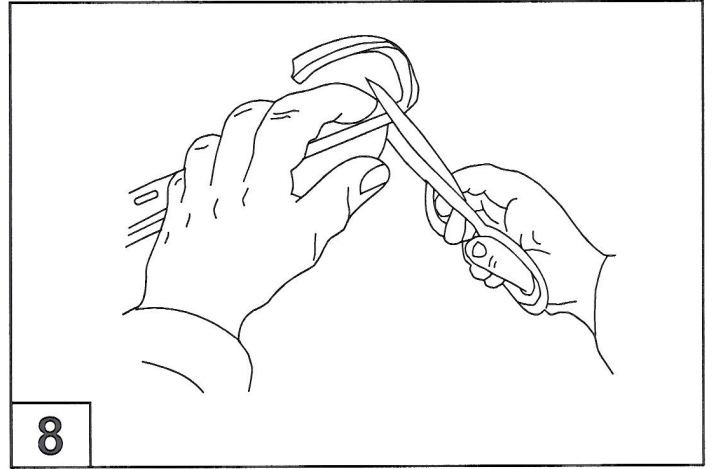
**5**  
Remove approximately 50mm of the protective liner from the extrusion. Fit the extrusion to the Fender Flare along the edge that comes in contact with the vehicle's body panel.



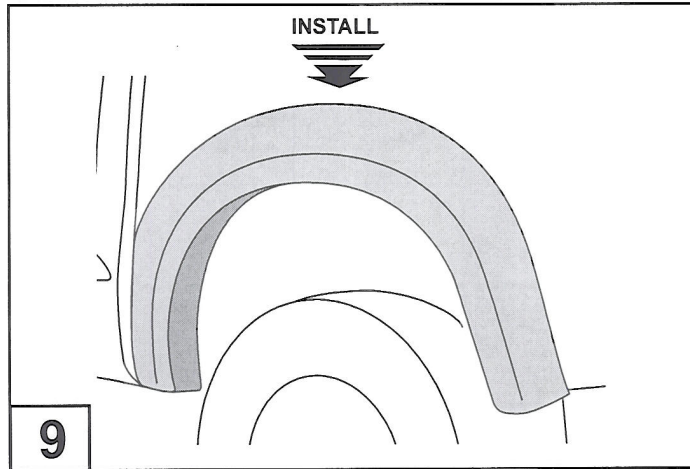
**6**  
To fit the extrusion around the petrol cap cutout on the LHS flare, cut a triangle out of the extrusion where it meets the "sharp corner" as shown.



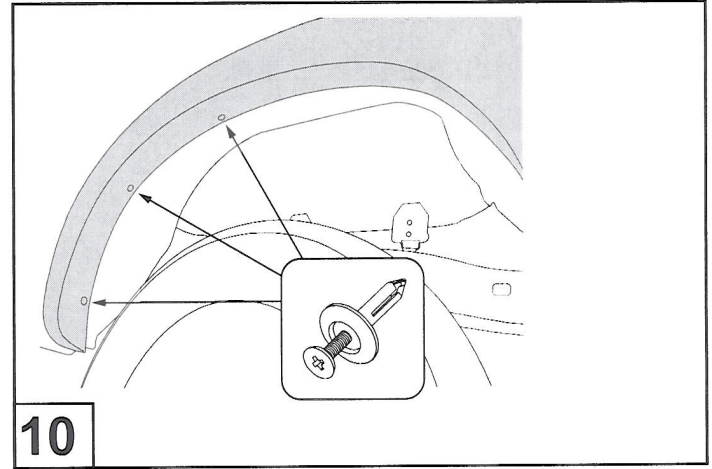
**7** Pulling at right angles to the extrusion, remove the liner from the extrusion in small portions and apply thumb pressure to ensure that it adheres to the Fender Flares.



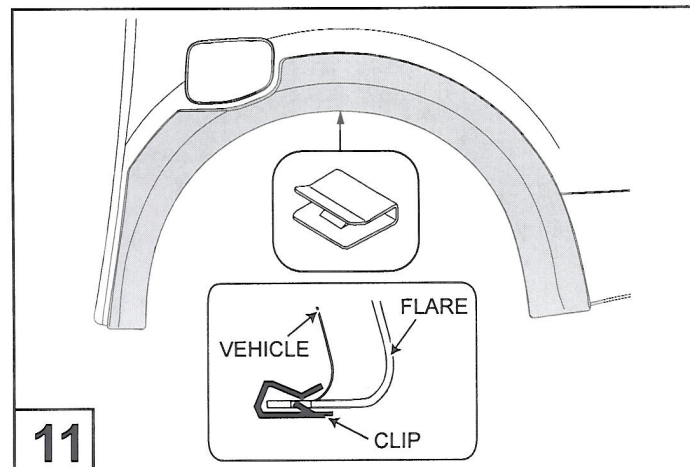
**8** Trim any unnecessary extrusion and discard.



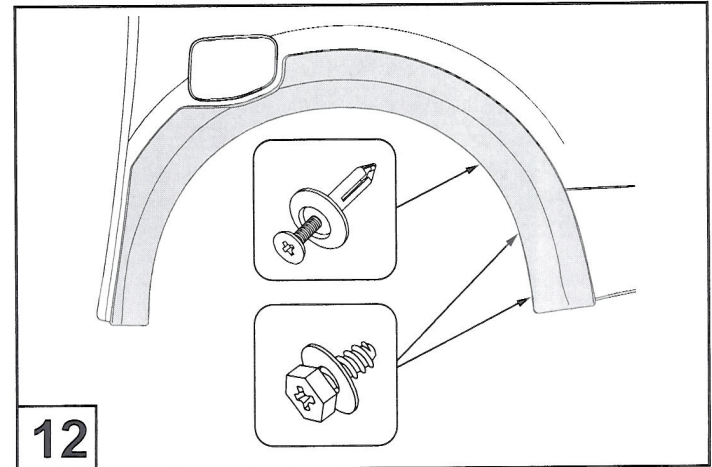
**9** Fit the Fender Flare to the vehicle as shown.



**10** Attach the front part of the rear fender flare with 3 scrivet as shown.



**11** Secure the middle of the fender flare to the wheel arch using 1 small metal clip as shown.



**12** Secure the rear of the fender flare to the wheel arch using 1 scrivet and 2 screws as shown.