

 **MISUTONIDA**
  *italian style* **4x4**
accessories

OPEL MOKKA 2012



Item Code

Codice Articolo

Référence Article

:GP/318/IX

GB

**STAINLESS STEEL
GRAND PEDANA**

ITA












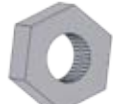




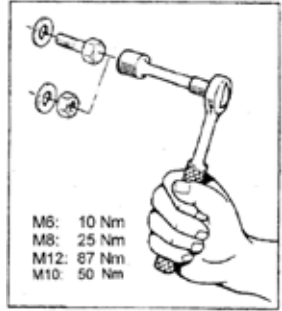
**GRAND PEDANA
IN ACCIAIO INOX**

FR

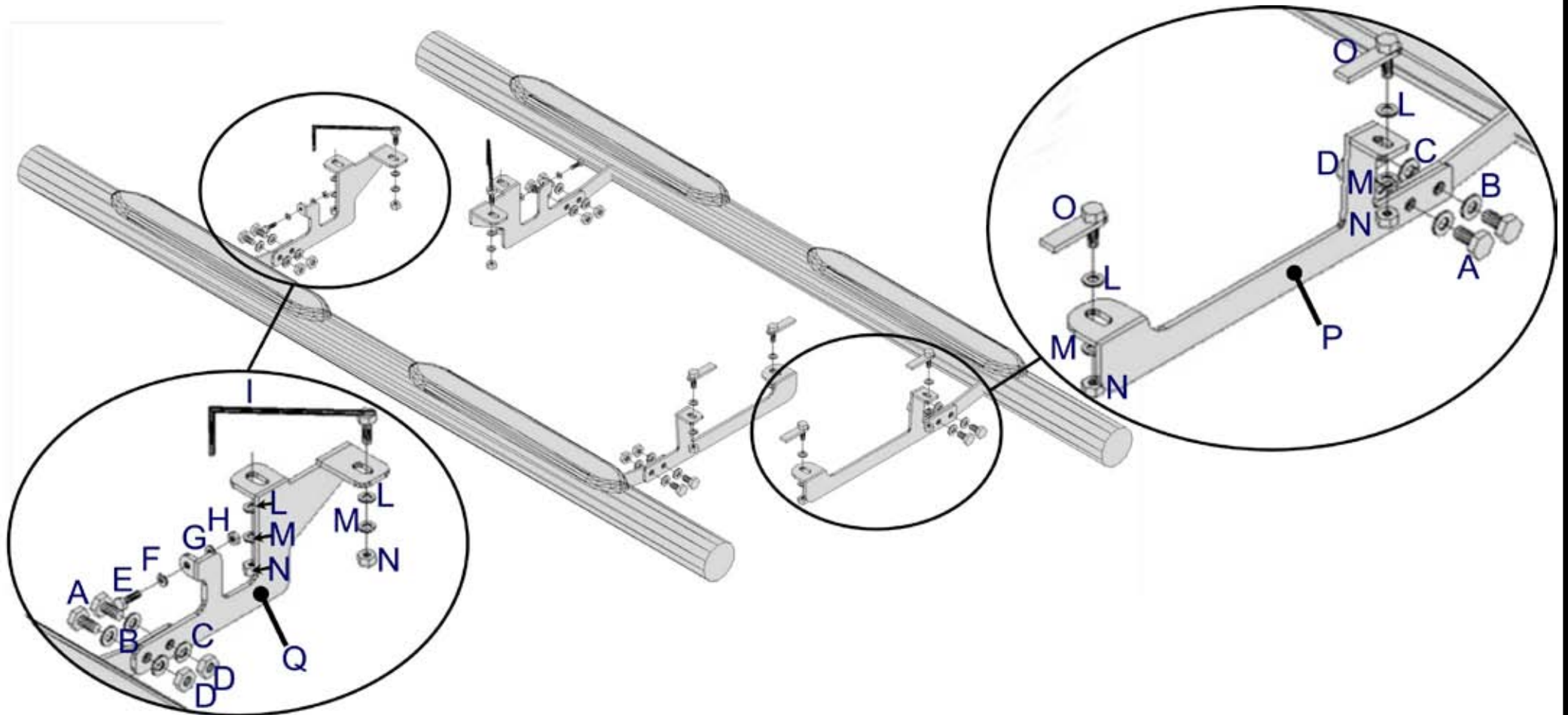
**GRAND PEDANA
EN ACCIER INOX**

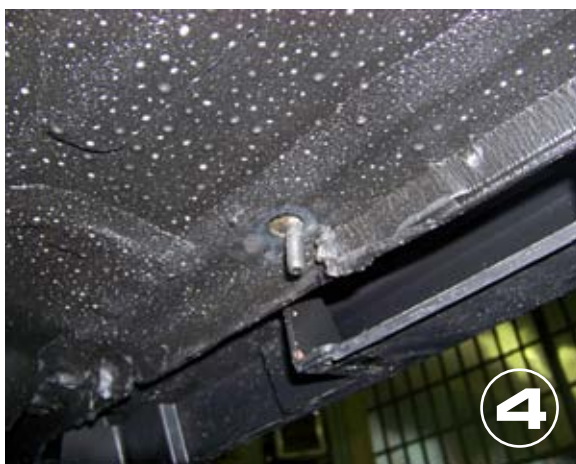
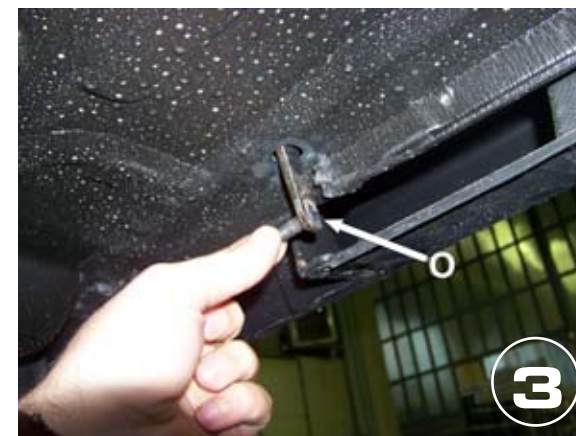
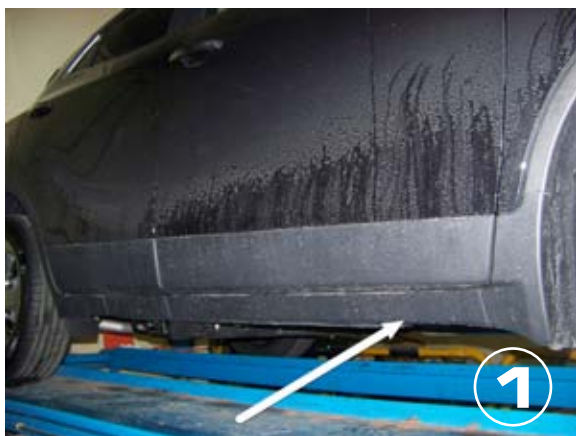
OPEL MOKKA 2012

Part List
 Lista della bulloneria
 Liste des pièces

A  TE 10X25 x 8	B  Ø 10 x 8	C  Ø 10 x 8	D  M 10 x 8	E  TE 6X25 x 2
F  Ø 6 Big Grandi x 2	G  Ø 6 x 2	H  M 6 x 2	I  SMA/298 x 2	L  Ø 8 Big Grandi x 8
M  Ø 8 x 8	N  M 8 x 8	O  P/318 x 4	P  P/318/A x 2	Q  P/318/B x 2
 Cappelletti M10 x 16				 <p>M6: 10 Nm M8: 25 Nm M12: 67 Nm M10: 50 Nm</p>

OPEL MOKKA 2012





Date Data Date	Item Code Cod.Articolo Réf. Article	Vehicle model Modello Veicolo Modèle de Voiture
19/02/13	GP/318/IX	OPEL MOKKA 2012

Document checked and approved by
Documento controllato ed approvato da
Document contrôlé et approuvé par

GALLO CLAUDIO





7



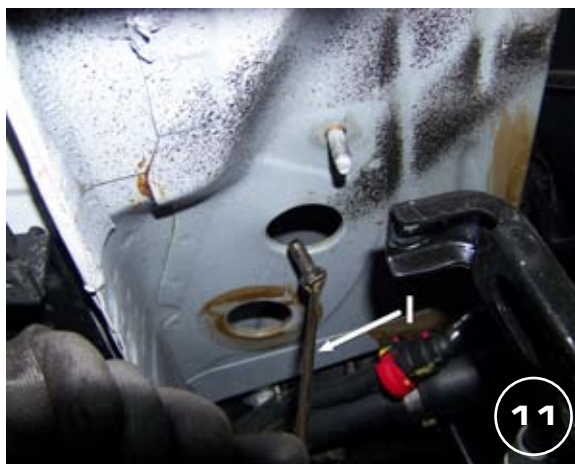
8



9



10



11



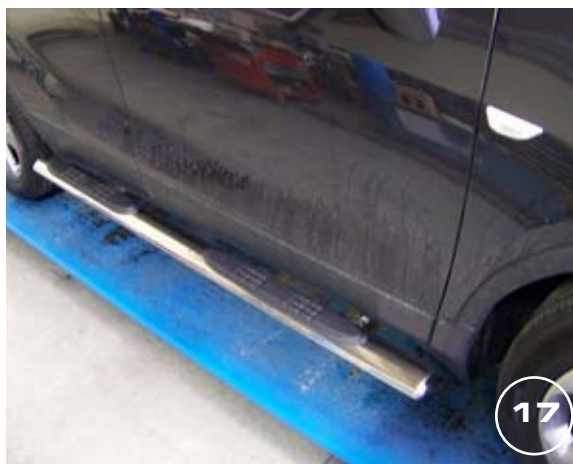
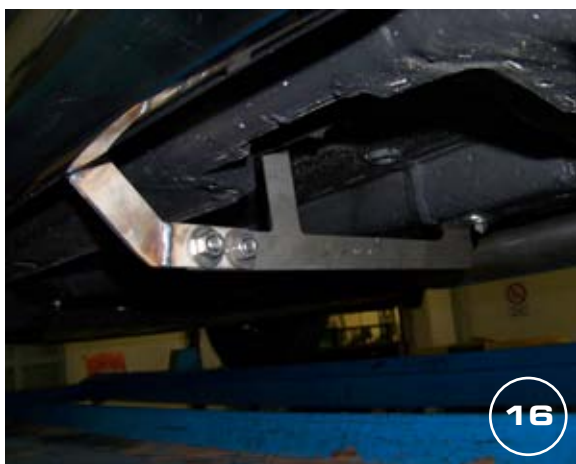
12

Date Data Date	Item Code Cod.Articolo Réf. Article	Vehicle model Modello Veicolo Modèle de Voiture
19/02/13	GP/318/IX	OPEL MOKKA 2012

Document checked and approved by
Documento controllato ed approvato da
Document contrôlé et approuvé par

GALLO CLAUDIO





Date Data Date	Item Code Cod.Articolo Réf. Article	Vehicle model Modello Veicolo Modèle de Voiture
19/02/13	GP/318/IX	OPEL MOKKA 2012

Document checked and approved by
Documento controllato ed approvato da
 Document contrôlé et approuvé par

GALLO CLAUDIO

MISUTONIDA
 italian style accessories **4x4**